

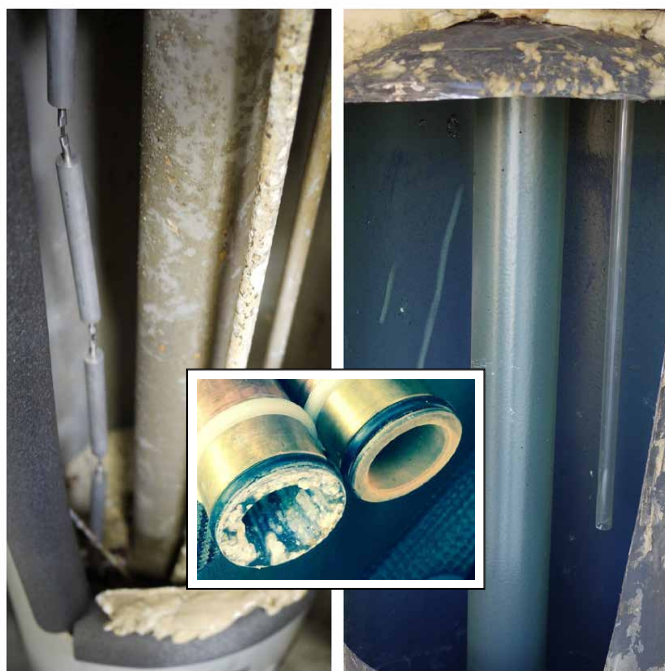
HALO
ION+ 2.0 PLUS

Whole House Inline Water Conditioning System

MAINTENANCE FREE!



What difference does the proprietary ION 2.0 Plus Scale Inhibitor make?



WITHOUT TREATMENT

After nearly 7 years of service on San Diego Municipal Water with no water treatment installed. Accumulation of Scale & Corrosion

WITH HALO ION

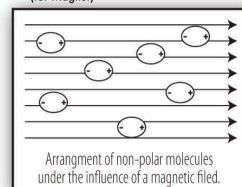
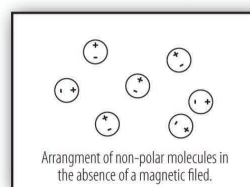
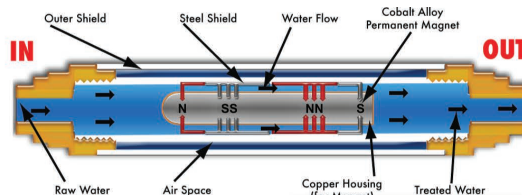
After nearly 7 years of service on San Diego Municipal Water with HALO 5 (INCLUDES ION) water treatment installed. **NO EVIDENCE OF SCALE OR CORROSION** (The marks on the back wall of the heater are where we ran a fingertip along the back to demonstrate the presence of the Aragonite talc.)

PRO TIP: The newly designed HALO ION 2.0 Plus no longer needs dielectric unions unless dissimilar metals are present to ensure electrolysis is not an issue during soldering.

TANK & TANKLESS

Water Heater Protection

Protect your tank or tankless water heater from lime scale build-up.



ION SCALE INHIBITOR PICTURED IS INSTALLED ON A RECIRCULATION LOOP.



FEATURES

- Installs in-line
- No electricity
- No drain
- Maintenance free
- 25 year warranty

BENEFITS

- Dissolves scale
- Inhibits scale
- Inhibits corrosion
- No slimy feeling
- Cleaner clothes

Parts AND labor on the first 10 years!

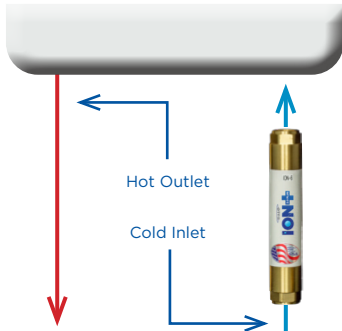


Scan code to learn more about ION 2.0 Plus



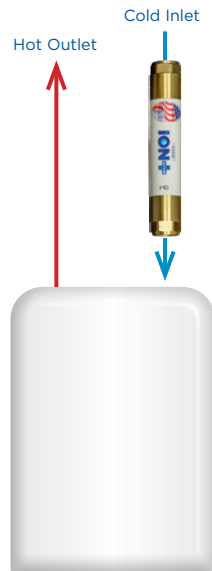
Tankless Water Heater

Installed on cold water inlet



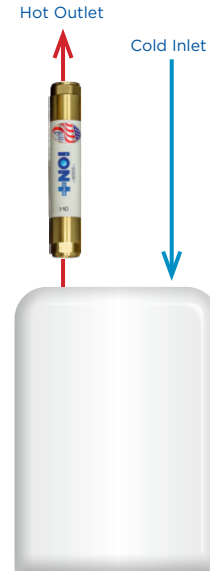
Tank Water Heater

Once through application



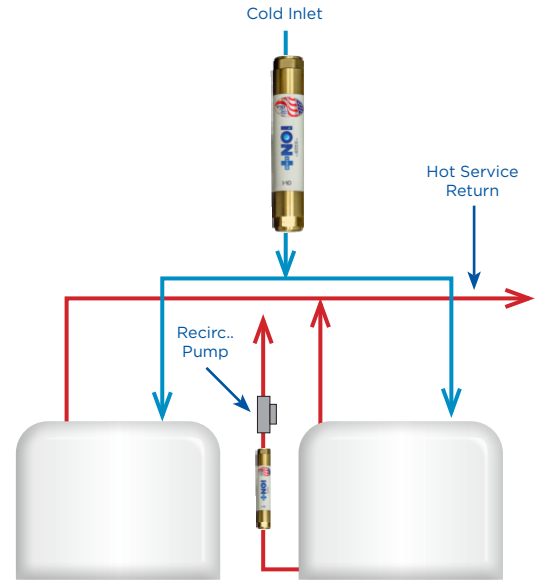
Tank Water Heater

With recirculation loop



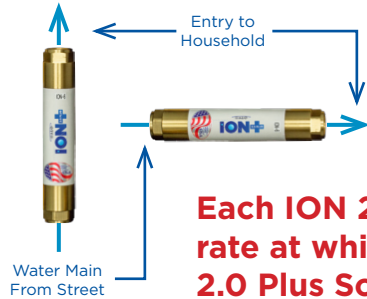
Commercial Tank Water Heater

With & without recirculation loop



Main Line - Whole House

Once through application



Each ION 2.0 Plus scale inhibitor is sized according to the maximum flow rate at which it will condition the water most effectively. The HALO ION 2.0 Plus Scale Inhibitor does not restrict water flow.

PRO TIP: The newly designed HALO ION 2.0 Plus no longer needs dielectric unions unless dissimilar metals are present to ensure electrolysis is not an issue during soldering.

ION Specifications

Whole House Water Conditioning System

Model	Dimensions	Fittings	Use Case	Flow Rate maxz
ION-H	1.125" D X 5" L	.25" Compression	Humidifier	6 GPH
ION-GH	1.25" D X 7.5" L	Hose Bib	Plant Watering	5 GPM
ION-6	1.75" D X 9" L	.75" FIP	Water Heaters	6 GPM
ION-9	2.25" D X 9.25" L	1" FIP	Whole House (1-2 bath)	9 GPM
ION-12	2.25" D X 13" L	1" FIP	Whole House (3-4 bath)	12 GPM
ION-20	2.25" D X 17" L	1" FIP	Whole House (4-6 bath)	20 GPM
ION-35	2.50" D X 16" L	1.5" FIP	Whole House (Multi-Unit)	35 GPM
ION-50	2.50" D X 16.50" L	2" FIP	Whole House (Multi-Unit)	50 GPM

All HALO ION 2.0 Plus Scale Inhibitor Series in-line water conditioners are 100% made in the USA and have a 10 year manufacturer's parts and labor warranty.