

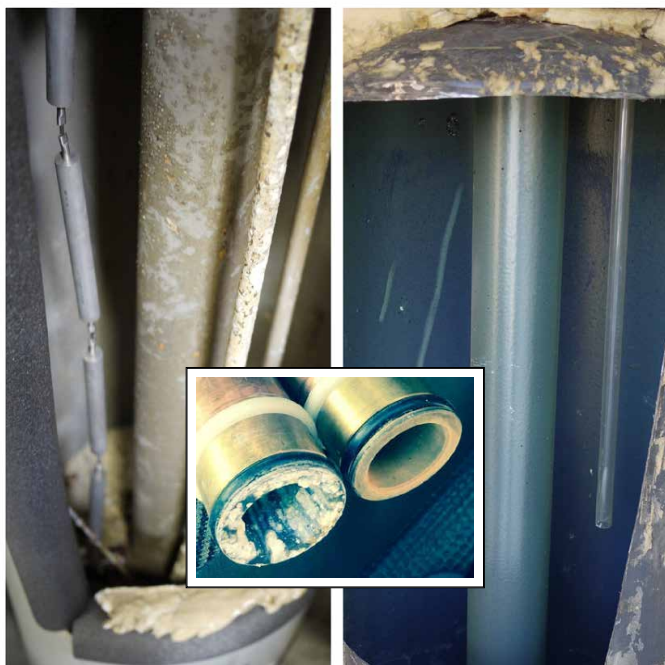


Whole House In line Water Conditioning System

MAINTENANCE FREE!



What difference does the proprietary
ION 2.0 Plus Scale Inhibitor make?



WITHOUT TREATMENT

After nearly 7 years of service on San Diego Municipal Water
with no water treatment installed.
Accumulation of Scale & Corrosion

WITH HALO ION

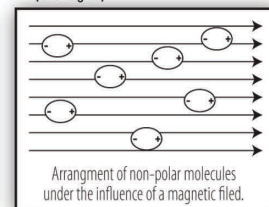
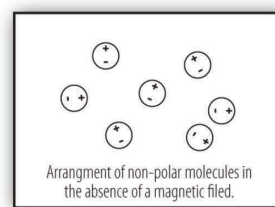
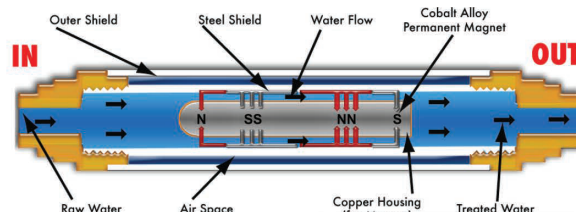
After nearly 7 years of service on San Diego Municipal Water
with HALO ION (INCLUDES ION) water treatment installed.
NO EVIDENCE OF SCALE OR CORROSION
(The marks on the back wall of the heater are where we ran a fingertip
along the back to demonstrate the presence of the Aragonite scale.)

PRO TIP: The newly designed HALO ION 2.0 Plus no longer
needs dielectric unions unless dissimilar metals are present
to ensure electrolysis is not an issue during soldering.

TANK & TANKLESS

Water Heater Protection

Protect your tank or tankless water heater from
lime scale build-up.



FEATURES

- Installs in-line
- No electricity
- No drain
- Maintenance free
- 25 year warranty
- Parts AND labor on
the first 10 years!

BENEFITS

- Dissolves scale
- Inhibits scale
- Inhibits corrosion
- No slimy feeling
- Cleaner clothes

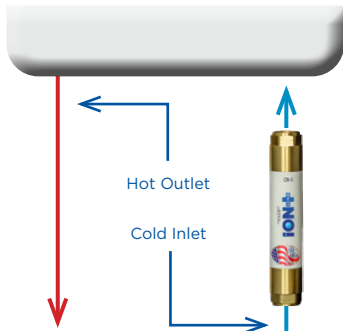


HALO
ION 2.0 PLUS
Scan code
to learn more



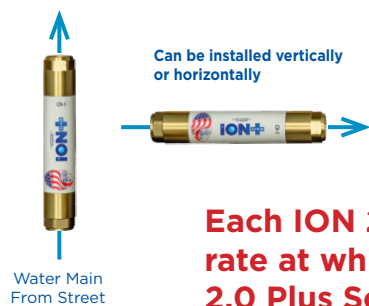
Tankless Water Heater

Installed on cold water inlet



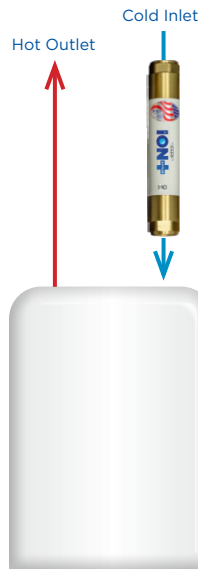
Main Line - Whole House

Once through application



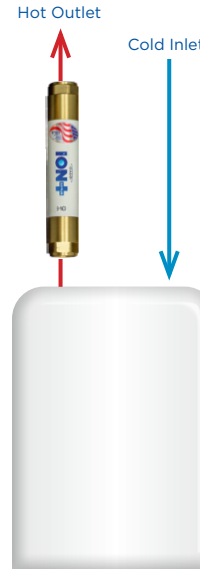
Tank Water Heater

Once through application



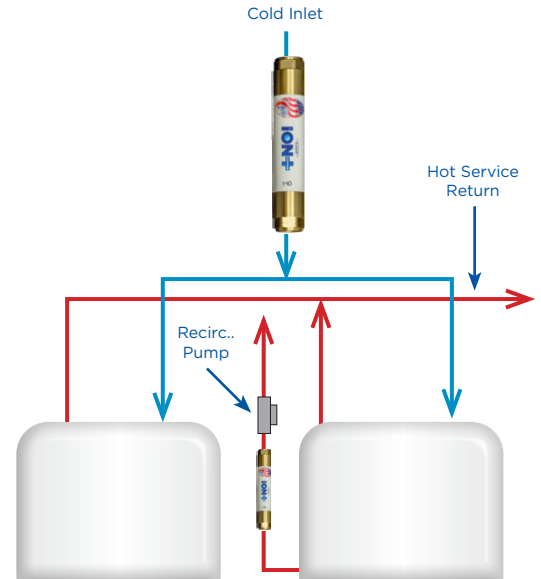
Tank Water Heater

With recirculation loop



Commercial Tank Water Heater

With & without recirculation loop



Each ION 2.0 Plus scale inhibitor is sized according to the maximum flow rate at which it will condition the water most effectively. The HALO ION 2.0 Plus Scale Inhibitor does not restrict water flow.

PRO TIP: The newly designed HALO ION 2.0 Plus no longer needs dielectric unions unless dissimilar metals are present to ensure electrolysis is not an issue during soldering.

ION Specifications

Whole House Water Conditioning System

| Model | Dimensions | Fittings | Use Case | Flow Rate Max |
|--------|--------------------|------------------|--------------------------|---------------|
| ION-H | 1.125" D X 5" L | .25" Compression | Humidifier | 6 GPH |
| ION-GH | 1.25" D X 7.5" L | Hose Bib | Plant Watering | 5 GPM |
| ION-6 | 1.75" D X 9" L | .75" FIP | Water Heaters | 6 GPM |
| ION-9 | 2.25" D X 9.25" L | 1" FIP | Whole House (1-2 bath) | 9 GPM |
| ION-12 | 2.25" D X 13" L | 1" FIP | Whole House (3-4 bath) | 12 GPM |
| ION-20 | 2.25" D X 17" L | 1" FIP | Whole House (4-6 bath) | 20 GPM |
| ION-35 | 2.50" D X 16" L | 1.5" FIP | Whole House (Multi-Unit) | 35 GPM |
| ION-50 | 2.50" D X 16.50" L | 2" FIP | Whole House (Multi-Unit) | 50 GPM |

All HALO ION 2.0 Plus Scale Inhibitor Series in-line water conditioners are 100% made in the USA and have a 25-year manufacturer's warranty with parts and labor included for the first 10 years.